



# GMT MONTHLY MEMBERSHIP PROGRESS REPORT

Results as of: 5/31/2018

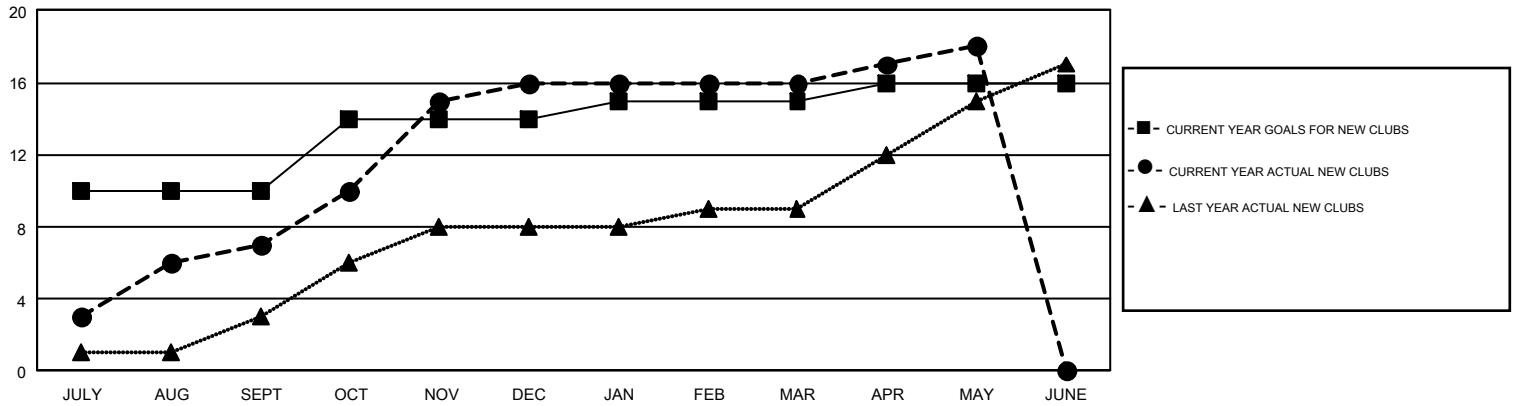
## GMT Constitutional Area 5, Group G

GMT: TERESA MANN

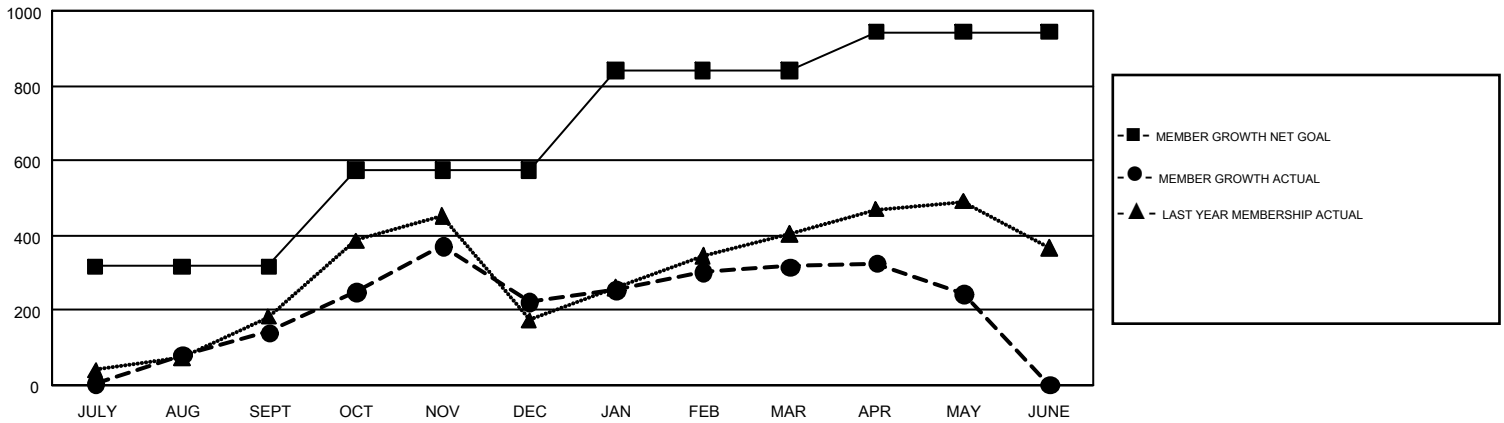
REPORT DOES NOT INCLUDE CLUBS IN UNDISTRICTED AREAS.

Clubs				Members			
RESULTS FOR 2017-2018				RESULTS FOR 2017-2018			
QUARTER	NEW CLUB GOAL	NEW CLUBS	DROPPED CLUBS	QUARTER	MEMBER GROWTH NET GOAL	MEMBER GROWTH ACTUAL	DROPPED MEMBERS ACTUAL (including transfers)
JULY/AUG/SEPT	10	7	2	JULY/AUG/SEPT	317	526	361
OCT/NOV/DEC	4	9	1	OCT/NOV/DEC	258	488	392
JAN/FEB/MAR	1	0	1	JAN/FEB/MAR	265	283	175
APR/MAY/JUNE	1	2	0	APR/MAY/JUNE	103	169	235

GOALS AND ACTUAL NEW CLUBS CUMULATIVE



GOALS AND ACTUAL MEMBERS CUMULATIVE



DROPPED CLUBS: 4	221 CLUBS OF 378 ADDED 1 OR MORE NEW MEMBERS	<b>GENDER DISTRIBUTION</b> MALE                    6,025 (59.40%) FEMALE                 4,118 (40.60%)
<b>DROPPED MEMBERS</b> DECEASED                    26 CLUB CANCELLED                40 OTHER                            1,097 <hr/> TOTAL                            1,163	<a href="#">CLICK HERE FOR CUMULATIVE MEMBERSHIP DATA</a>	TOTAL FAMILY UNIT MEMBERS                    408  FAMILY MEMBERS PAYING HALF DUES                    224